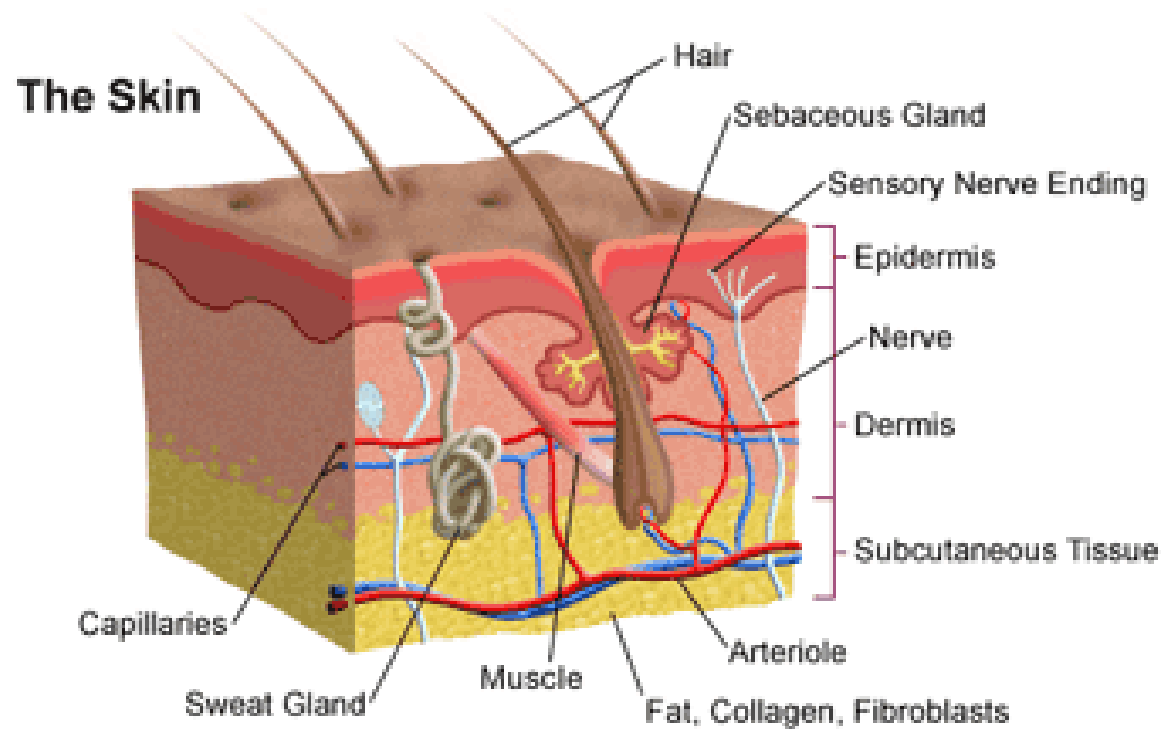




# Burns

# Anatomy



# Classification

- Epidermal
- Partial Thickness

*Superficial*

*Deep*

- Full Thickness







# Cause

- Contact
- Radiant
- Chemical
- Electrical



# Initial Steps

- Stop the burning
- ABCs (look for inhalation injury)
- Inspect entire body / Diagram
- IV Fluids (Parkland Formula)





# Inhalation Injury

- CO Poisoning
- Upper airway Obstruction
- Pulmonary Injury

See table 11-1



# Referral to Burn Center

- Size
- Depth
- Location
- Type
- Comorbidities
- Age

See table 11-2



# Burn Shock

- Systemic Shock from large burns.



# Fascial excision

## Pros

- Optimal tissue bed
- Less blood loss

## Cons

- Possible Tendon / Nerve damage
- Cosmetic Defect



# Tangential Excision

## Pros

- Cosmetic

## Cons

- Blood Loss
- Experience



# Other Areas of Burn Care

- Infection Control

- Nutrition

- Rehab