

WELCOME TO UT GSM

INTERNAL MEDICINE



2015

DEPARTMENT OF MEDICINE



Dr. Rajiv Dhand

**Rajiv Dhand, M.D. FCCP, FACP,
FAARC**

Chairman and Professor,
Department of Medicine



Mark S. Rasnake, M.D. FACP

Assistant Professor, Department of
Medicine
Program Director, Medicine Residency



Daphne M. Norwood, M.D., M.P.H.

Assistant Professor, Department of Medicine
Program Director, Transitional Year Residency
Associate Program Director, Medicine
Residency

CHIEF RESIDENTS



Brock T. Mitchell, MD
Chief Resident

*East Tennessee State
University College of
Medicine*



Nathan P. Smith, MD
Chief Resident

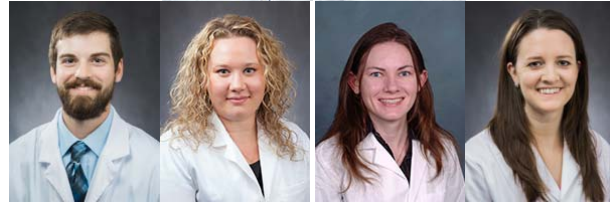
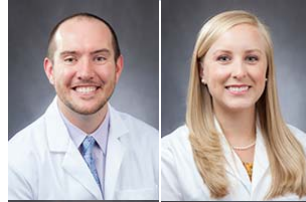
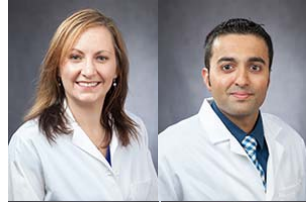
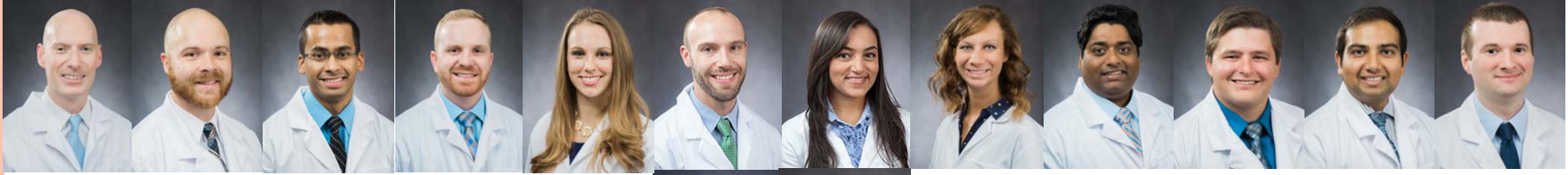
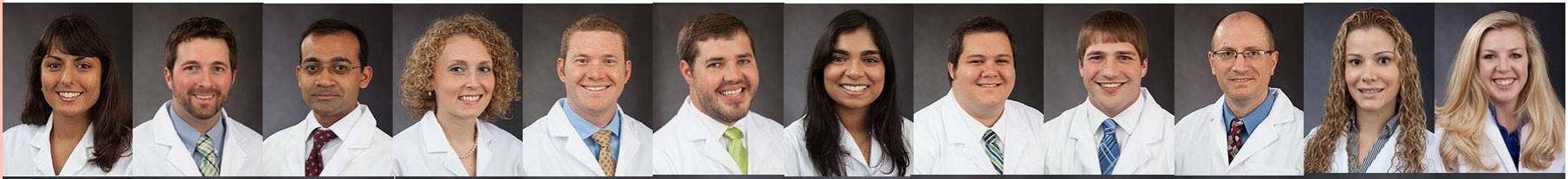
*University of Tennessee
Health Science Center
College of Medicine*



Rafaela Wesley, DO
Chief Resident

*Philadelphia College of
Osteopathic Medicine*





ACADEMIC SUCCESSES (BRICK BY BRICK...)

- 91% 3 year board pass rate
- Resident Research Representation at National Meetings
 - APDIM
 - Toronto
 - National ACP
 - Southern Hospital
- Active resident led research projects:
 - Healthcare quality / safety
 - CHF patient outcomes
 - Clinic LEAN process improvement
 - Central line bloodstream infections

○ Available resources

- Annually ITE
- MKSAP-17
- Hopkins Modules
- READ app
- Preston Medical library
- HLVI database



BOARD PASS RATE

Tennessee

Program Name City and State	Number of Examinees	Number Passing	Percent Passing	95% Confidence Interval
East Tennessee State University Program Johnson City, TN	80	61	76	71-81
Meharry Medical College Program Nashville, TN	42	29	69	62-76
University of Tennessee (Nashville) Program Nashville, TN	16	12	75	65-85
University of Tennessee College of Medicine at Chattanooga Program Chattanooga, TN	26	20	77	69-85
University of Tennessee Medical Center at Knoxville Program Knoxville, TN	23	21	91	82-100
University of Tennessee Program Memphis, TN	72	48	67	61-73
(Combined Internal Medicine-Pediatrics)	20	15	75	66-84
Vanderbilt University Program Nashville, TN	105	98	93	88-98



FELLOWSHIP FOR GRADUATES

- 2015 Grads
 - 1 Cards
 - 1 Allergy
 - 1 Endo
- 2014 Grads
 - 1 Nephro
 - 1 Endo
 - 1 Cards
- 2013 Grads
 - 1 Endo
 - 1 Rheum
 - 1 Allergy
 - 1 Nephro
- 2012 Grads
 - 2 Cardiology
 - 1 Sports Med
- 2011 Grads
 - 1 Allergy
 - 1 Palliative Care
- 2010 Grads
 - 2 Cardiology
- 2009 Grads
 - 1 Sleep
 - 1 Pulmonary



About the Hospital

- 580 bed acute care teaching hospital
- 62 bed Emergency Department
- Regional referral center
- Level 1 Trauma Center
- Certified Primary Stroke Center
- Aeromedical Service Base
- Magnet Hospital – award for excellence in nursing
- Medical Simulation Center
- Preston Medical Library



Preston Medical Library



INTERN SCHEDULE TEMPLATE

- Divided into 26 blocks
 - House Staff Medicine: 7
 - Ambulatory Care: 8
 - MICU: 2
 - Night Float: 2
 - Cardiology: 2
 - Emergency Department: 2
 - Electives: 2
 - Vacation: 3 weeks (*plus holiday schedule*)

	1 7/1 - 7/13	2 7/14 - 7/27	3 7/28 - 8/10	4 8/11 - 8/24	5 8/25 - 9/7	6 9/8 - 9/21	7 9/22 - 10/5
Parikh	HSM	HSM	GI	AmbMed	INF	ED	AmbMed
WilliamsK	Subs	MICU	HSM	HSM	AmbMed	SICU	HSM
McFarlandK	HSM	HSM	AmbMed	Rheum	ED	AmbMed	INF
Hussein	HSM	HSM	Ortho	AmbMed	ED	Vac	AmbMed
Stroupe	Subs	Cards	HSM	HSM	AmbMed	Cards	Vac
Collins	HSM	HSM	AmbMed	MICU	Rheum	AmbMed	HSM
Sammons	HSM	HSM	Behavmed	AmbMed	HSM	HSM	AmbMed
Shields	Subs	Vac	HSM	HSM	AmbMed	HSM	ED
Isang	HSM	HSM	AmbMed	GI	Cards	AmbMed	HSM
MorrisJ	Cards	Subs	INF	AmbMed	HSM	ED	AmbMed
Wehber	Cards	Subs	AmbMed	INF	Cards	AmbMed	HSM



HOUSE STAFF MEDICINE

- 3 HSM teams
 - 1 senior, 2-3 interns, 1-2 M3s, 1 M4, and pharmacist
 - 4 week blocks
 - Census 13-15 patients
 - EMR with Dragon voice recognition software
 - Only day admits, separate NF rotation



AMBULATORY BLOCK

- **Resident clinic**

- AM and PM Clinics
- On site Venipuncture
- 2 IT support staff
- 14 exam rooms



- **Sub-speciality Clinics**

- PGY-1 (Nephrology, Rheumatology, GI, and Oncology)
- PGY-2 (Cards Diagnostic, Palliative, Hematology, and Women's Health)
- PYG-3 (Allergy, Endocrinology, REACT, and Behavioral Health)

- **Team Based Learning**

- Online ambulatory modules
- Pathways
- CODE BLUE Simulations
- Bedside Procedure simulations



CRITICAL CARE

- Two MICU services
 - Each team with 1 attending, 2 residents, and 1-2 interns
 - ICU pharmacist
- ICU Nurse Practitioners
 - Residents able to work within integrative healthcare provider model



ABOUT KNOXVILLE...

- Recognized as one of the most livable cities
- Low cost of living
- 4 general seasons
- Multiple festivals and weekly concerts
- Places rated almanac #1 place to live in cities under 1 million
- Small Local airport with access to major airlines and cities



RESIDENT LIFE OUTSIDE THE HOSPITAL

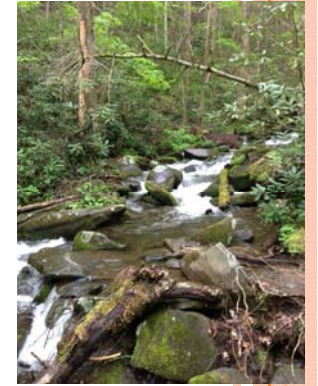
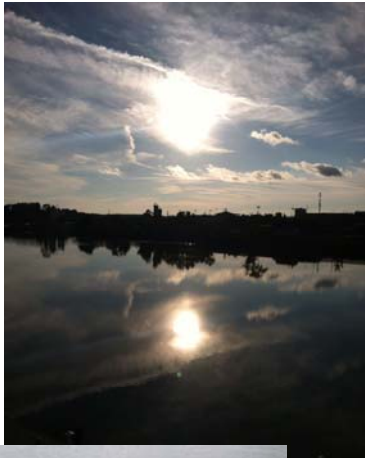


WHAT TO DO ON YOUR DAYS OFF?

- Plenty of outdoor activities
- Downtown
- Market Square
- Sporting Events
- Old City
- Concord Park/Turkey Creek
- Gatlinburg/ Pigeon Forge
- Chattanooga
- Nashville
- Asheville
- Atlanta



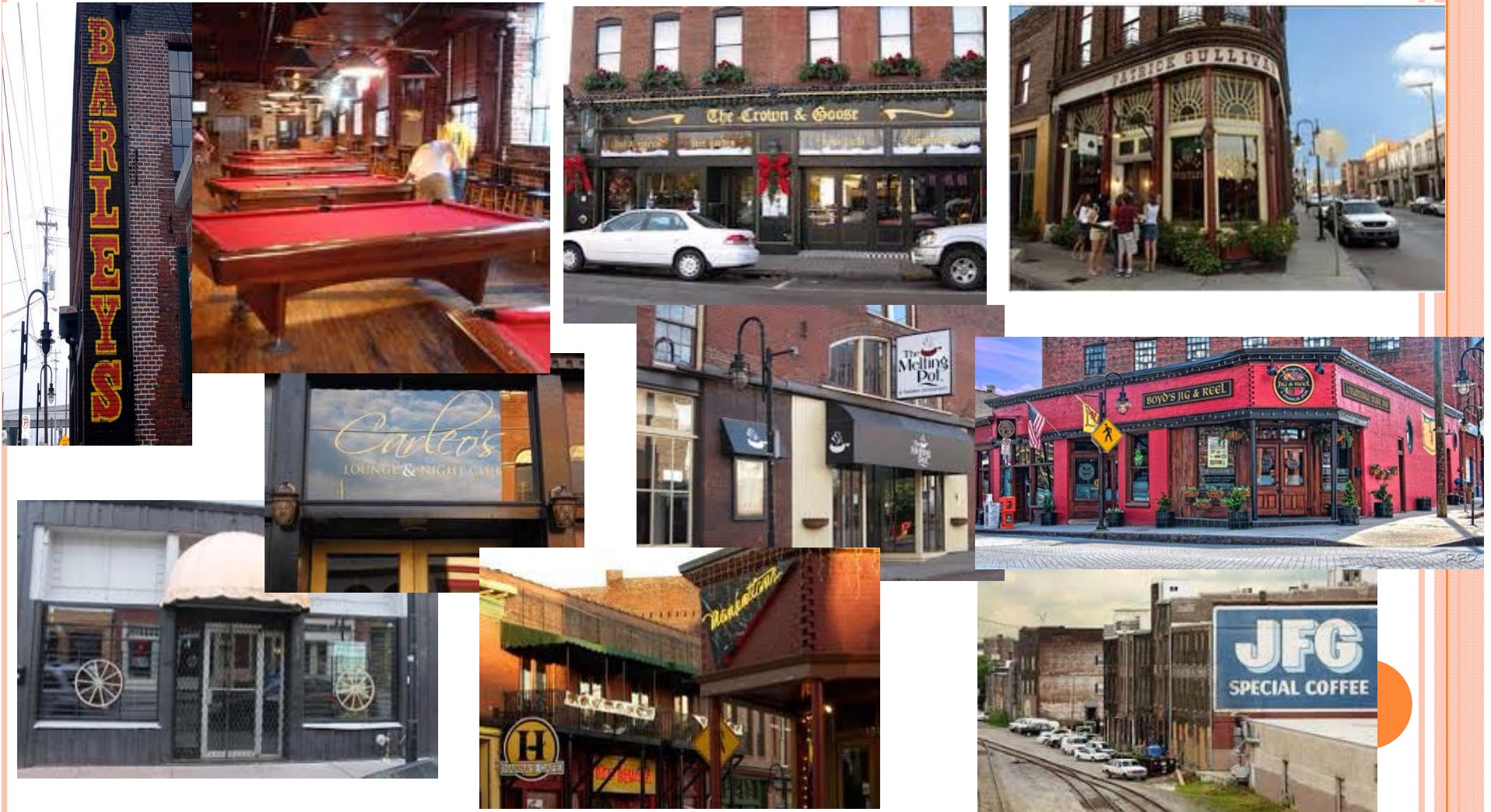
THE OUTDOORS!!!



SPORTING EVENTS



OLD CITY (DOWNTOWN KNOXVILLE)



MARKET SQUARE (DOWNTOWN KNOXVILLE)



WORLD'S FAIR PARK



GATLINBURG/PIGEON FORGE

