

The University of Tennessee
Graduate School of Medicine

Mission Statement and Core Values

Mission Statement

As part of the [University of Tennessee Health Science Center](#), [The Graduate School of Medicine](#), Knoxville, subscribes to a four-fold mission of excellence in **education, patient care, research, and service.**

Our mission is to provide comprehensive and state-of-the-art education for our students, the region's health care professionals, and the health science professionals who educate them at the Medical Center and its affiliated sites.

Our mission will be in concert with the goals and initiatives of our clinical partner, [University Health System Incorporated](#). We will work with their administration and staff to fulfill all of the regulatory requirements of the ACGME, ACCME, JCAHO, SACS, the State of Tennessee and other appropriate accrediting bodies. Together, as the University of Tennessee Medical Center in Knoxville, we will strive to meet the needs of our community, our region, and our state.

GSM Core Values

- To foster an innovative learning organization through the leadership of pre-eminent faculty.
- To educate fellows, residents, and students to provide competent, safe and compassionate healthcare
- To promote basic science and clinically relevant research
- To cultivate physicians to be educational scholars, lifelong learners and informed consumers of clinical research
- To collaborate with our partners and community for shared responsibility

UHS MISSION

The University of Tennessee Medical Center is part of **University Health System Inc.** (UHS), a regional health system that comprises the UT Medical Center, UT Health Network and various partnerships and joint ventures with physicians and healthcare companies. UHS is affiliated with the University of Tennessee Graduate School of Medicine and numerous regional hospitals and physician organizations. UHS supports and collaborates with the UT Graduate School of Medicine and other academic endeavors as part of its commitment to excellence in education and research.

Mission

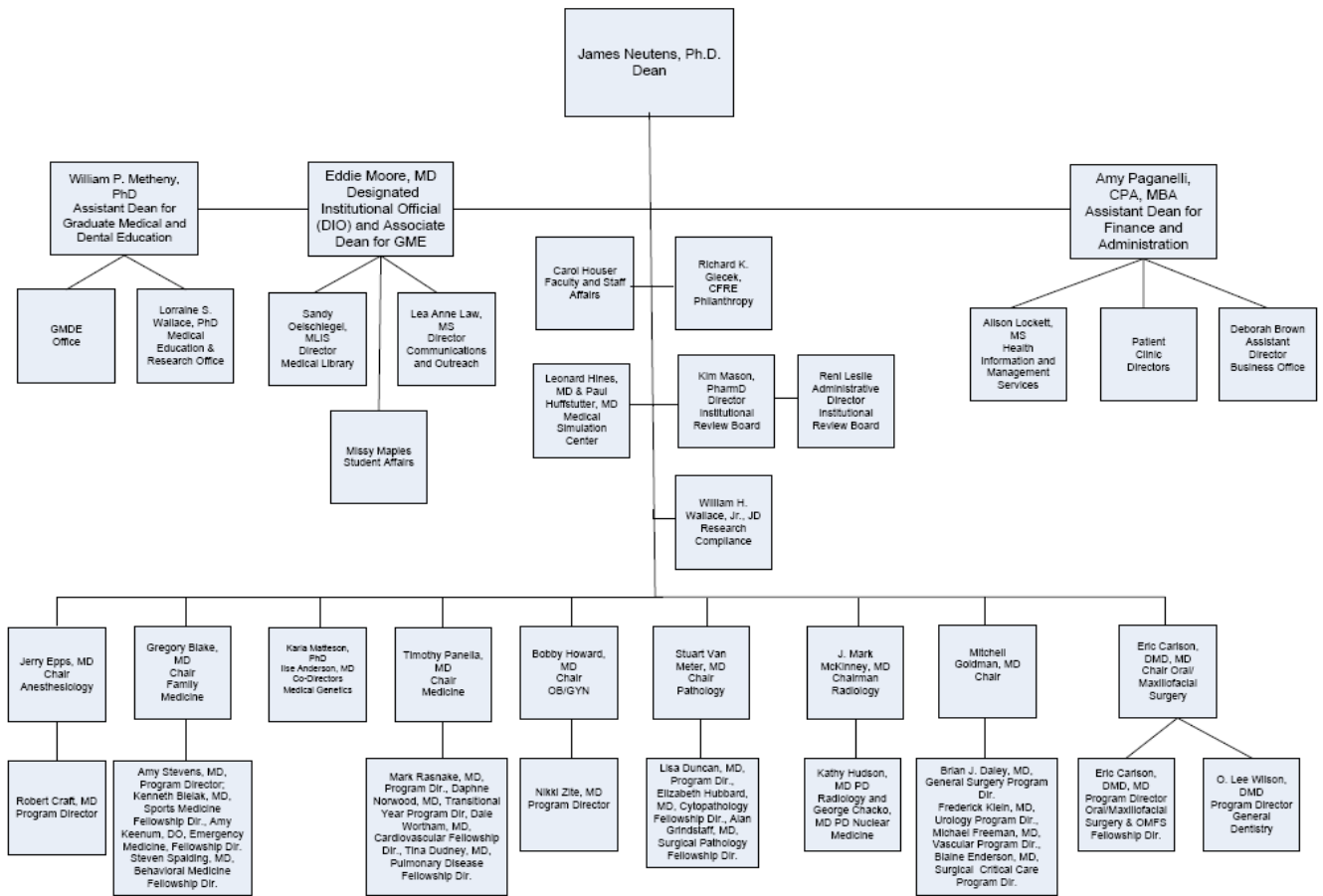
To serve through healing, education and discovery

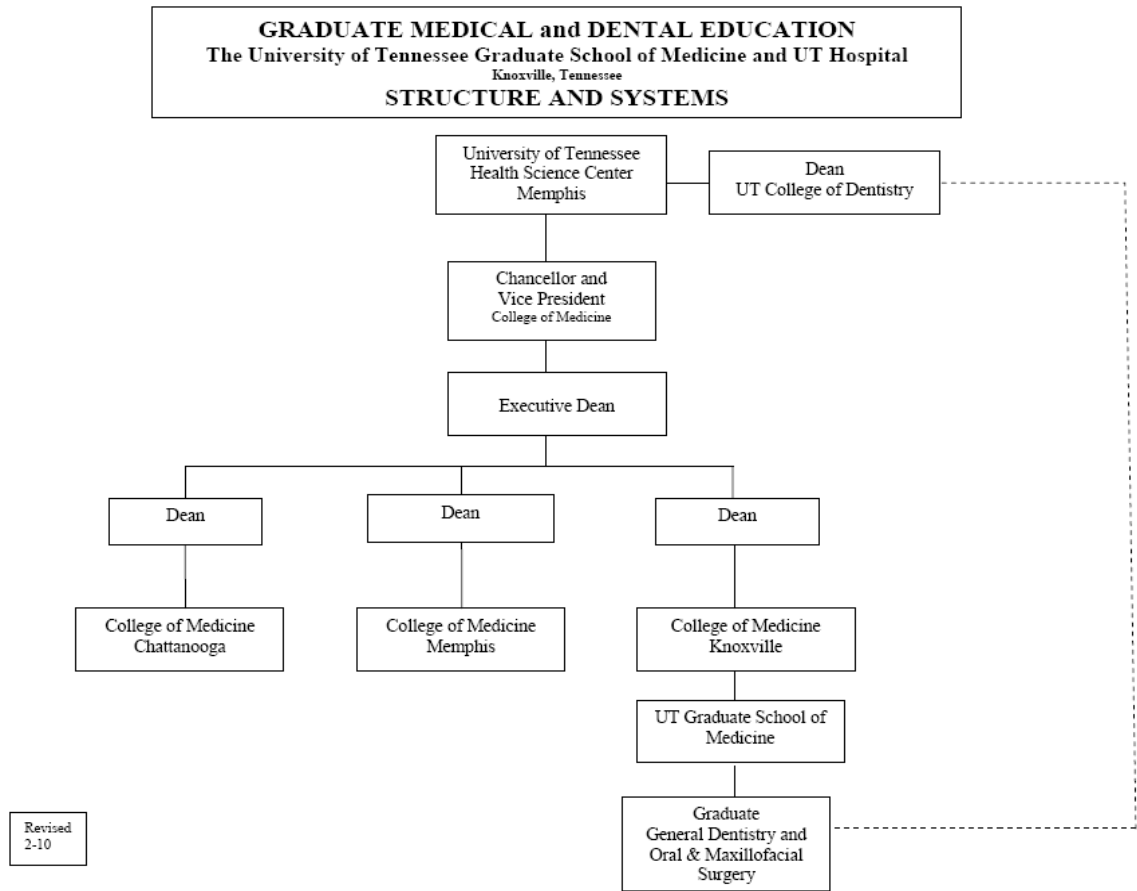
Vision

The University of Tennessee Medical Center will be nationally recognized for excellence in patient care, medical education and biomedical research.

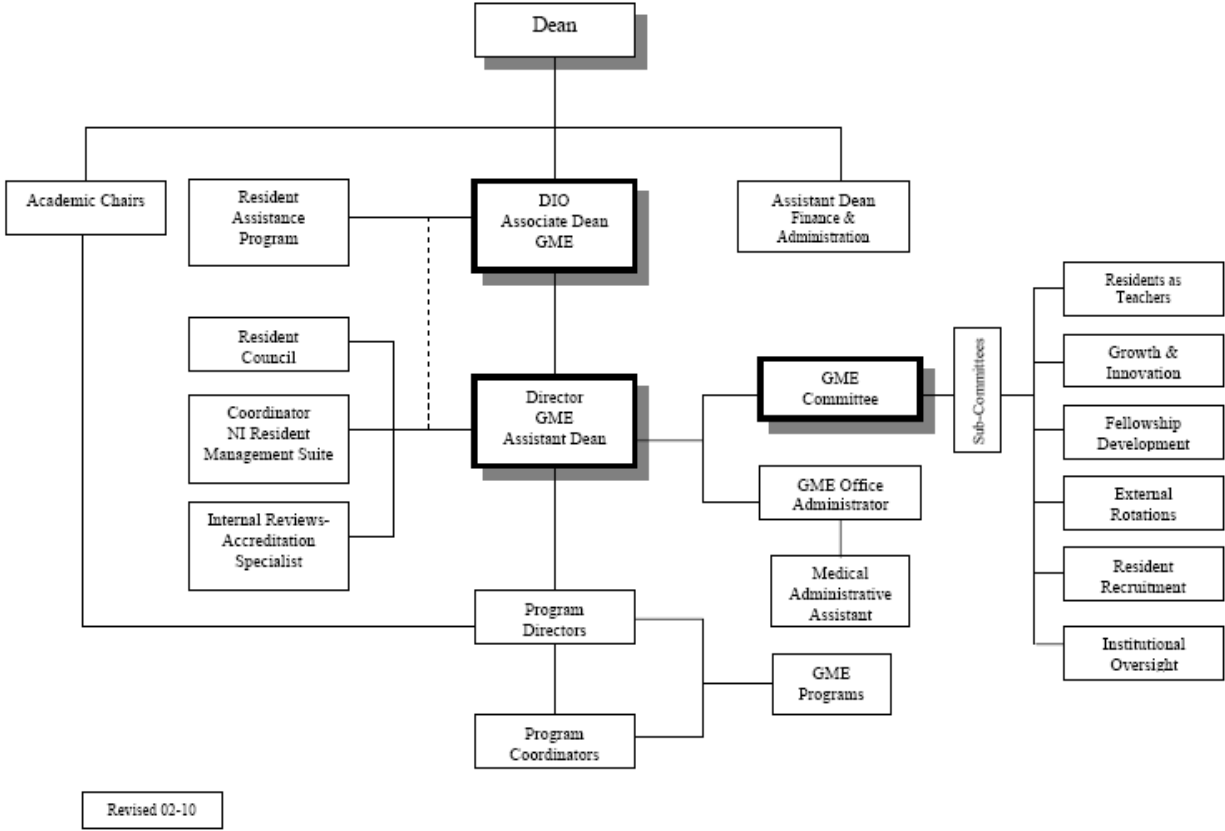
UHS believes in and is committed to a set of values that characterize its obligation and responsibility as a leader in healthcare, including integrity, excellence, compassion, innovation, collaboration and dedication.

Administrative Organizational Chart
The University of Tennessee Graduate School of Medicine



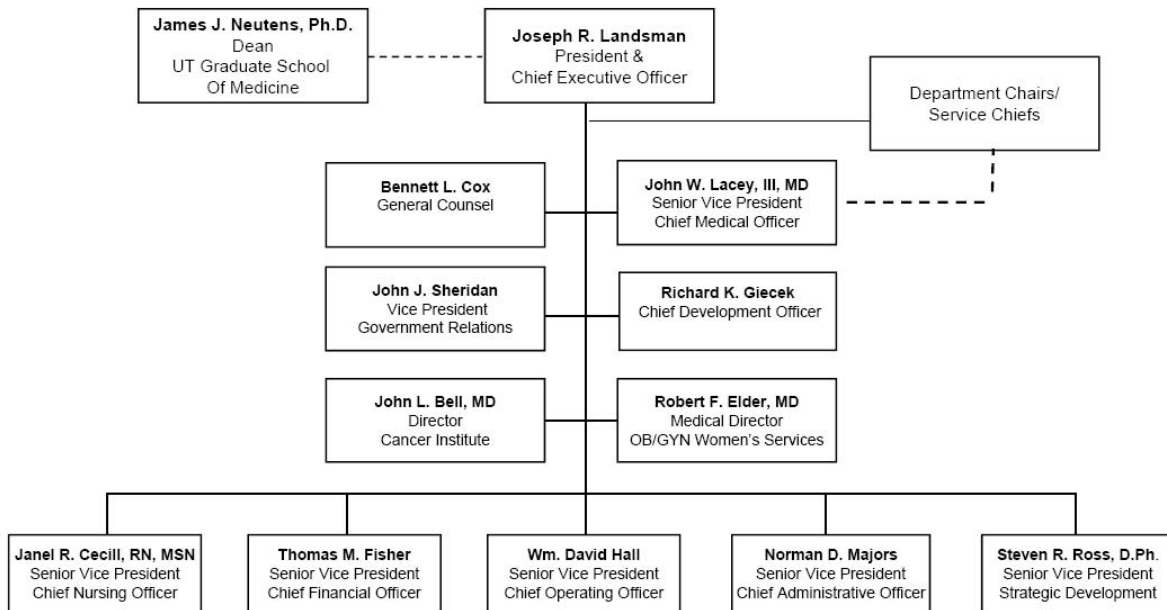


**ADMINISTRATIVE OVERSIGHT AND SUPERVISION
GRADUATE MEDICAL EDUCATION**
(ACGME Common Institutional Requirement II.A.2)
UT Graduate School of Medicine/UT Health Sciences Center-Knoxville





University Health System, Inc.



THE UNIVERSITY OF TENNESSEE
GRADUATE SCHOOL OF MEDICINE

Dean James Neutens, PhD
Associate Dean for GMDE Eddie S. Moore, MD
Assistant Dean for GMDE William P. Metheny, PhD

DEPARTMENTAL CHAIRPERSONS

Anesthesiology Jerry Epps, MD
Family Medicine Gregory H. Blake, MD
Internal Medicine Timothy J. Panella, MD
OB/GYN..... Bobby Howard, MD
Pathology Stuart Van Meter, MD
Pediatrics Eddie S. Moore, MD
Radiology..... J. Mark McKinney, MD
Surgery Mitchell H. Goldman, MD
OMFS..... Eric R. Carlson, DMD, MD
General Dentistry..... O. Lee Wilson, DMD
Medical Genetics..... (Co-Director) Karla Matteson, PhD
..... (Co-Director) Ilse Anderson, MD

**THE UNIVERSITY OF TENNESSEE
GRADUATE SCHOOL OF MEDICINE**

OFFICE OF GRADUATE MEDICAL and DENTAL EDUCATION

Designated Institutional Official (DIO) Eddie S. Moore, MD

Assistant Dean William Metheny, PhD

Medical Administrative Assistant II Martha Branch

Data Manager..... Cortni Haralson, MPH

Internal Review Specialist Jo Ann Cornelius

Graduate School of Medicine **Internet** Address:

<http://www.gsm.utmck.edu>

Graduate School of Medicine **Intranet** Address:

<http://pulse/index.cfm>

THE UNIVERSITY OF TENNESSEE HEALTH SCIENCE CENTER
GRADUATE SCHOOL OF MEDICINE
PROGRAM DIRECTORS

Anesthesiology	Robert Craft, M.D.
Cardiovascular Disease Fellowship	Dale Wortham, M.D.
Cytopathology.....	Elizabeth Hubbard, M.D.
Family Medicine	Amy Barger-Stevens, M.D.
Family Practice Behavioral Medicine	Steven L. Spalding, M.D.
Family Practice Emergency Medicine	Amy Keenum, D.O.
Family Practice Sports Medicine	Kenneth Bielak, M.D.
General Dentistry.....	O. Lee Wilson, D.M.D
Internal Medicine	Mark Rasnake, M.D.
Nuclear Medicine	George Chacko, M.D.
OB/GYN.....	Nikki Zite, M.D.
Oral & Maxillofacial Surgery	Eric R. Carlson, D.M.D., M.D.
Pathology.....	Lisa Duncan, M.D.
Pulmonary Disease Fellowship	Tina Dudney, M.D.
Radiology.....	Kathleen Hudson, M.D.
Surgery (General).....	Brian Daley, M.D.
Surgical Critical Care	Blaine Enderson, M.D.
Surgical Pathology	Alan Grindstaff, M.D.
Transitional Year.....	Daphne Norwood, M.D.
Urology.....	Fredrick T. Klein, M.D.
Vascular Surgery	Michael Freeman, M.D.

**THE UNIVERSITY OF TENNESSEE
GRADUATE SCHOOL OF MEDICINE**

DEPARTMENTAL SUPPORT STAFF

DEPARTMENT/PROGRAM	COORDINATOR/STAFF	PHONE/LOCATION
Anesthesiology	Paige Rinehart/Robin Baldwin	5673
Cardiovascular Disease Fellowship	Pam Trentham	6324
Family Medicine	Nancy Smith	5057
Family Medicine Fellowships	Khristie Harris	5087
General Dentistry	Rose LaSorsa	9191
General Surgery	Ginger Miya/Patty Hamilton	9230
Internal Medicine	Sissy Ensor-Best	6501
Nuclear Medicine	Deborah Jarvis/Bertha Jarnigan	8685
OB/GYN	Mary Ann Murphy	9584
Oral & Maxillofacial Surgery	Pennie Cable	9123
Pathology/Cytopathology	Pam Guider	8994
Pulmonary Disease Fellowship	Pam Trentham	6324
Radiology	Deborah Jarvis/Bertha Jarnigan	9062
Surgical Critical Care	Ginger Miya/Patty Hamilton	9230
Transitional Year	Sissy Ensor-Best	6501
Urology	Ginger Miya/Patty Hamilton	9230
Vascular Surgery	Ginger Miya/Patty Hamilton	9230

ACGME INSTITUTIONAL REQUIREMENTS

GRADUATE MEDICAL and DENTAL EDUCATION COMMITTEE (GMDEC)

A. GMEC Composition and Meetings

1. The Sponsoring Institution must have a GMEC.
2. Voting membership on the committee must include the DIO, residents nominated by their peers, representative program directors, and administrators. It may also include other members of the faculty or other members as determined.
3. The GMEC must meet at least quarterly and maintain written minutes.

Policy for Composition of GMDEC

The GMDEC membership will consist of Program Directors, Program Coordinators, peer selected resident representatives, faculty appointed to serve by the GMDEC chair, a UT legal representative, and representatives from UHS administration. All members, except the Program Coordinators, will have voting privileges.

Policy for Membership Attendance (for 2010-2011)

GMDEC members should attend 70% of the monthly meetings. The GMDEC chair will send an annual written record of attendance to each member.

Reviewed by GMDEC on 9/10/09